

DRC

DRC

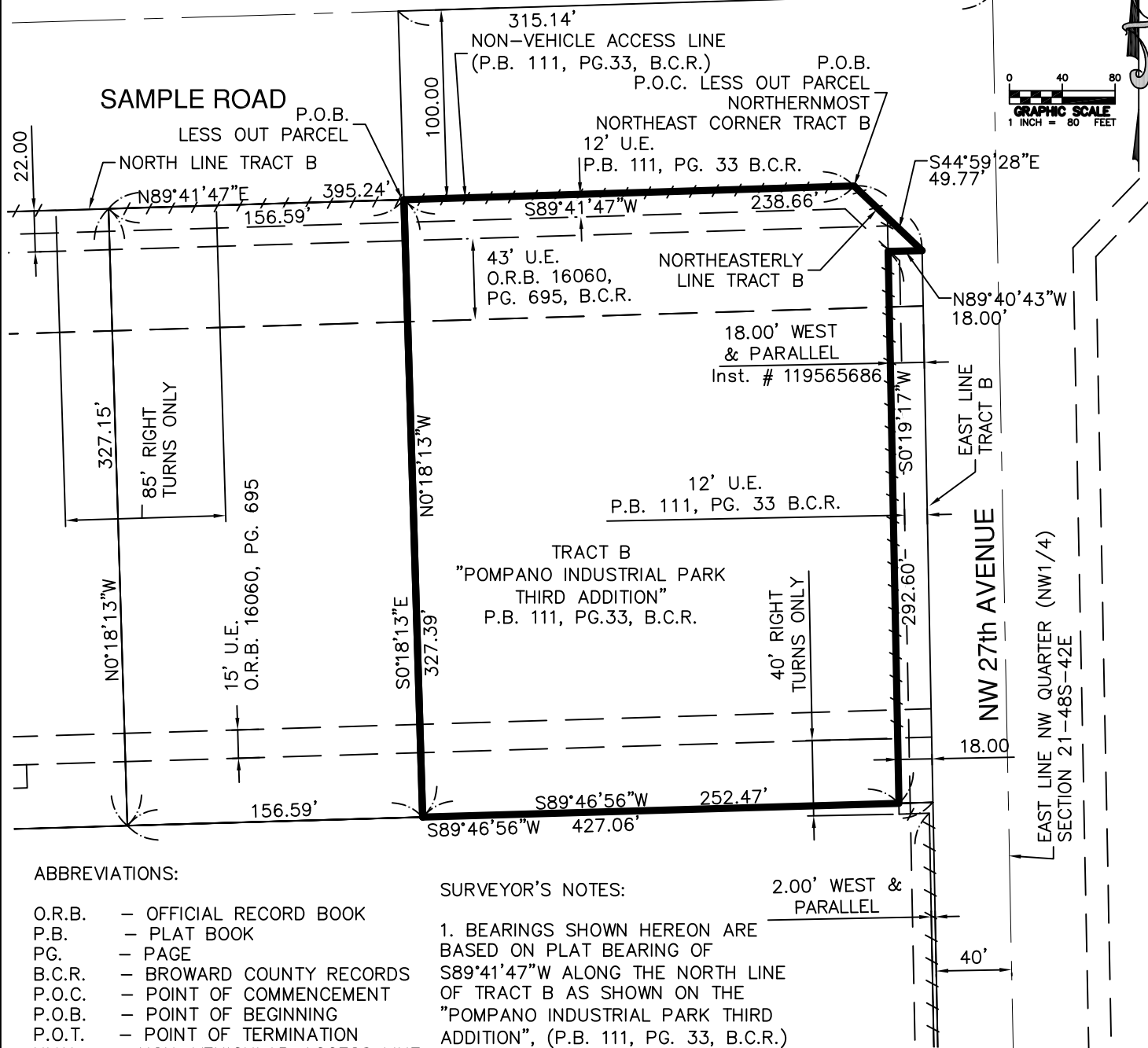
SHEET 1 OF 2

PZ22-12000027

07/02/2025

NORTH QUARTER CORNER
SECTION 21-48S-42E

PZ22-12000027
12/03/2025



ABBREVIATIONS:

O.R.B. - OFFICIAL RECORD BOOK
P.B. - PLAT BOOK
PG. - PAGE
B.C.R. - BROWARD COUNTY RECORDS
P.O.C. - POINT OF COMMENCEMENT
P.O.B. - POINT OF BEGINNING
P.O.T. - POINT OF TERMINATION
NVAL - NON-VEHICULAR ACCESS LINE

SURVEYOR'S NOTES:

1. BEARINGS SHOWN HEREON ARE BASED ON PLAT BEARING OF S89°41'47"W ALONG THE NORTH LINE OF TRACT B AS SHOWN ON THE "POMPAÑO INDUSTRIAL PARK THIRD ADDITION", (P.B. 111, PG. 33, B.C.R.)

SEE SHEET 2 OF 2 FOR SKETCH

SKETCH & DESCRIPTION

THIS SKETCH DOES NOT REPRESENT A BOUNDARY SURVEY

CERTIFIED TO:

FESTIVAL FLEA MARKET

No. 5857
SECTION 21-48S-42E, FLORIDA STATUTES.
DATED THIS 23rd DAY OF DECEMBER 2024 A.D.

MILLER

LEG

South Florida Office: 13680 NW 5th Street, Suite 200
Sunrise, Florida - 33325
954-436-7000
www.millerlegg.com

STATE OF

MARTIN P. ROSSI
PROFESSIONAL SURVEYOR AND MAPPER
STATE OF FLORIDA REGISTRATION No. 5857
VALID WITHOUT THE SIGNATURE AND THE ORIGINAL
CERTIFICATE OF AUTHORIZATION: LB6680

PROJECT NO.

24-00048

FILE NO.

SD-2

REVISIONS

DWN. CHK.

DRAWN BY:

LP

CHECKED BY:

MR